



CUSTOMER:

Customer Name: ALINVEST

PROJECT:

Project Code: E2558

Project Name: ALFAGEN

DOCUMENT INFORMATION:



Document Title: Equipment Spider Diagram

Contractor File Name: 2558-33x1-CHM\_SKM-E-DWG-SPD

Contractor Revision Number: A

Customer File Name: -

Customer Revision Number: -

						CONTRACTOR		CONTRACTOR dwg number	Rev. A	Project Code E2558	Project Name ALFAGEN					
								2558-33x1-CHM_SKM-E-DWG-SPD								
						CLIENT		CLIENT dwg number -	Rev. -	Document Title Equipment Spider Diagram			Scale 1:1			
A	29/11/2025	INITIAL VERSION			RORI					RORI	RORI	DESIGNED: RORI	DRAWN: RORI	APPROVED: RORI	Format A3	
Rev.	Date	Revisions description			Designed					Draw	Approved	DATE: 29/11/2025	DATE: 29/11/2025	DATE: 29/11/2025	Sheet 1 OF x	
1			2		3		5		6		7	8	9	10	11	12

# POWER AND CONTROL PANEL


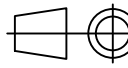
## r43.64-0311-GEN-GEN01-PCP01

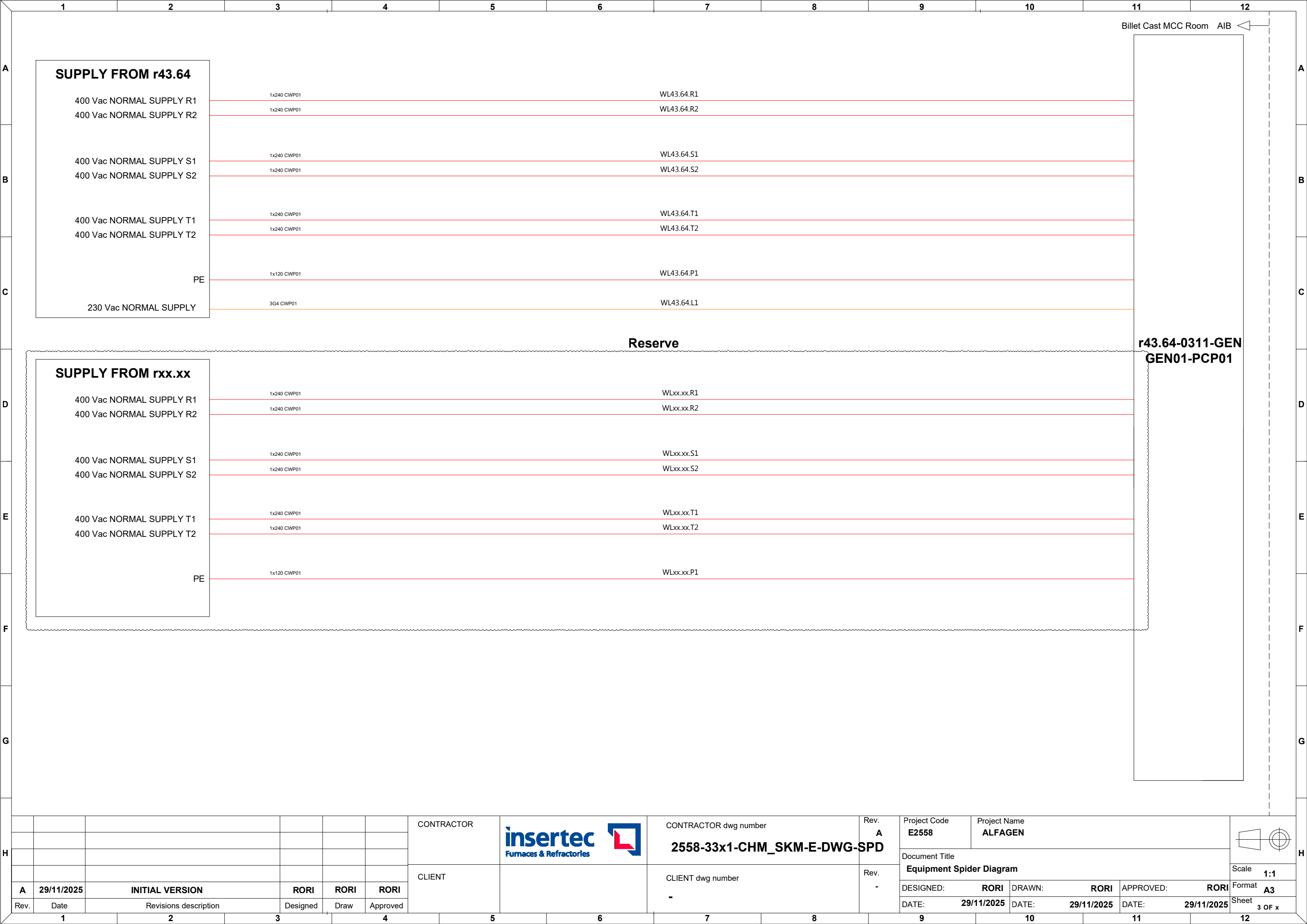
### LEGEND

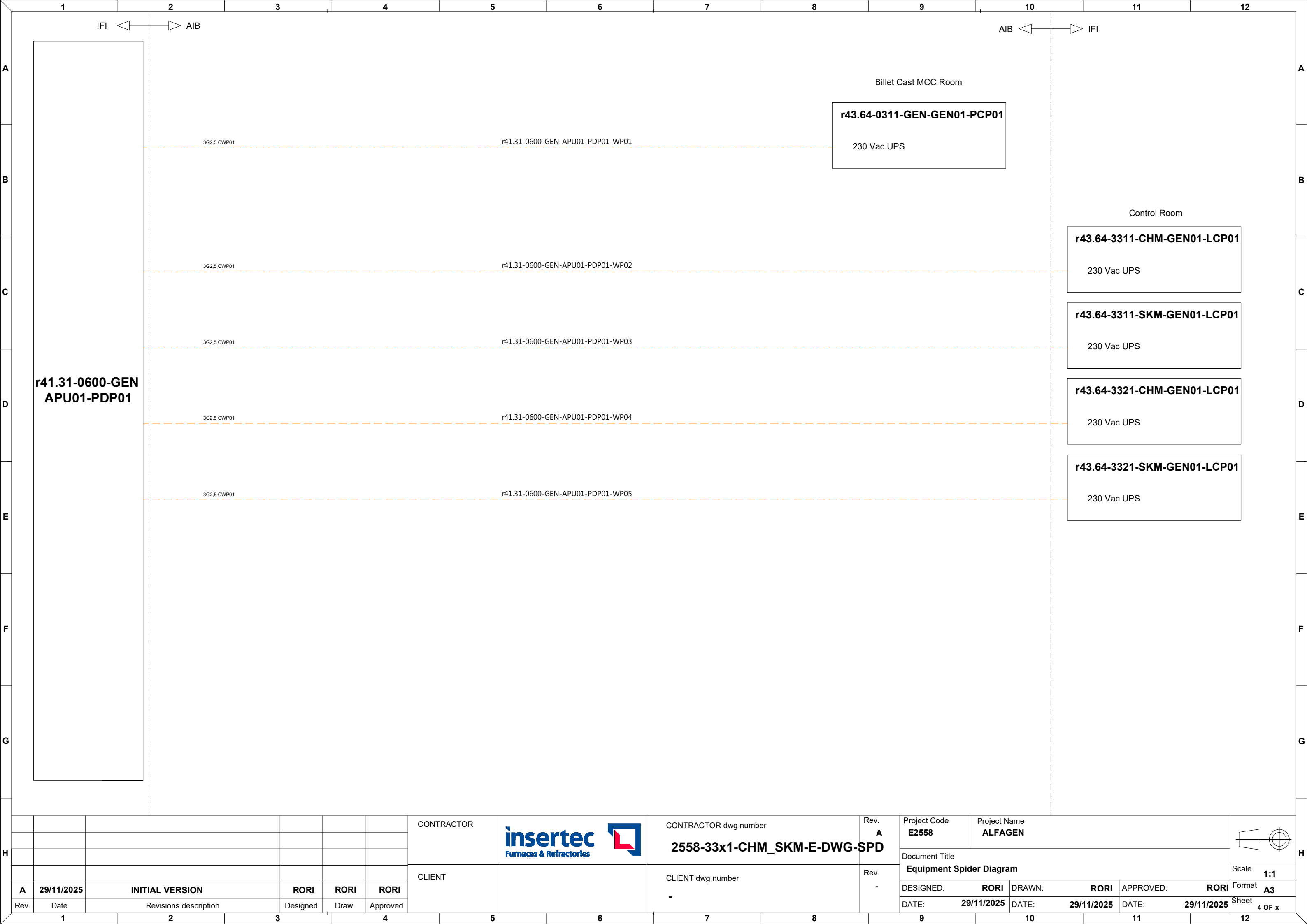
	400Vac Power supply		Regular control signals
	400Vac UPS power supply		Analog & shielded signals
	230Vac Power supply		T/C connection
	230Vac UPS power supply		Communication connection


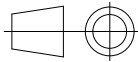
### CATEGORY

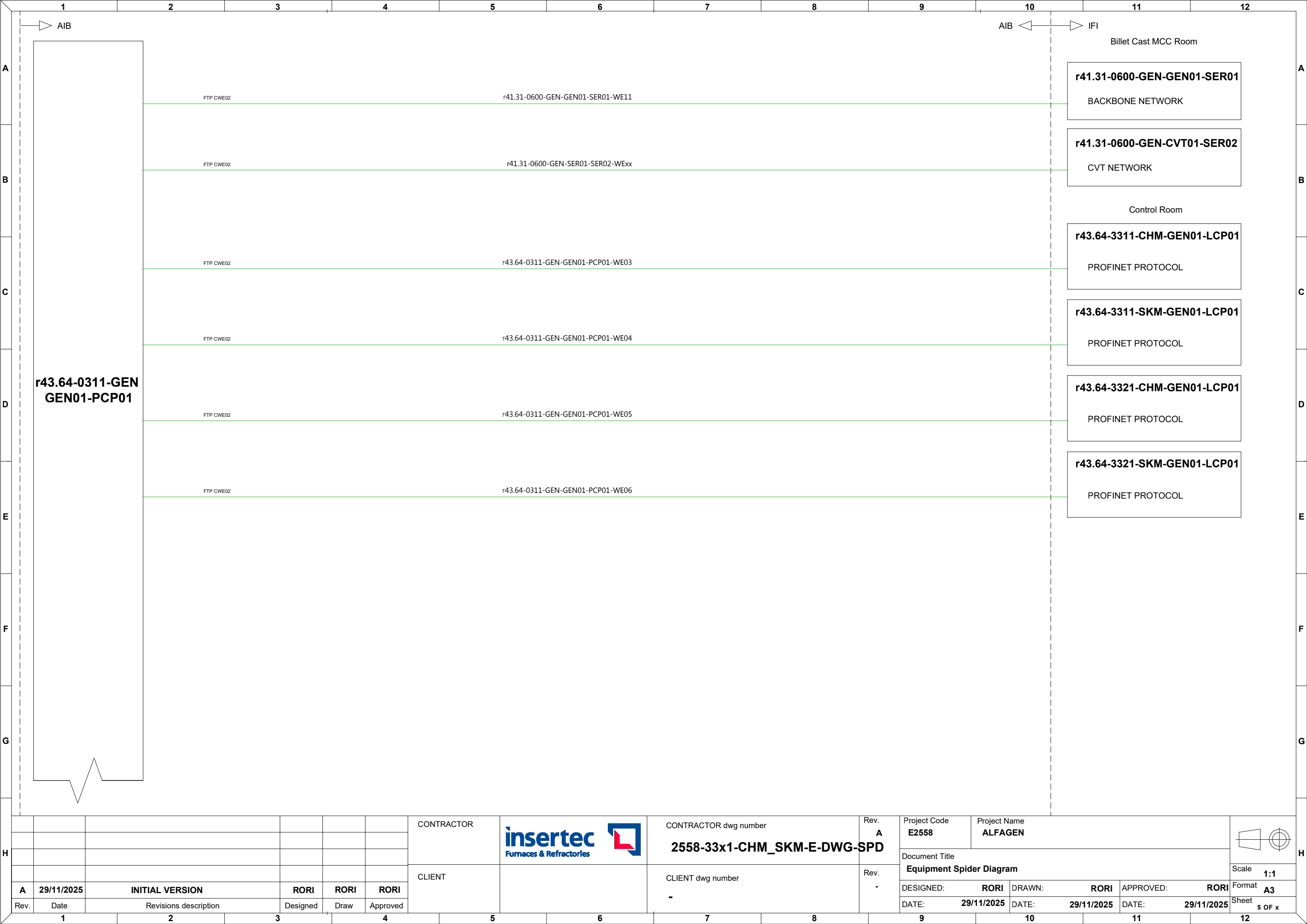
Power cables
CWP01: Regular power cables
CWP02: Shielded power cable
CWP03: Flexible power cables
CWP04: Regular high temperature power cables
CWP05: Shielded high temperature power cables
CWP06: General use power cable
Instrumentation and control cables
CWC01: Regular instrumentation control cables
CWC02: Shielded instrumentation control cables
CWC03: Thermocouple cable
CWC04: Flexible instrumentation control cables
CWC05: High voltage cables for ignition transformers
CWC06: Regular high temperature instrumentation control cables
CWC07: Shielded high temperature instrumentation control cables
Communication cables
CWE01: Fieldbus communication cable (Inside cabinets)
CWE02: Fieldbus communication cable (Outside cabinets)
CWE03: Optic fibre communication cable

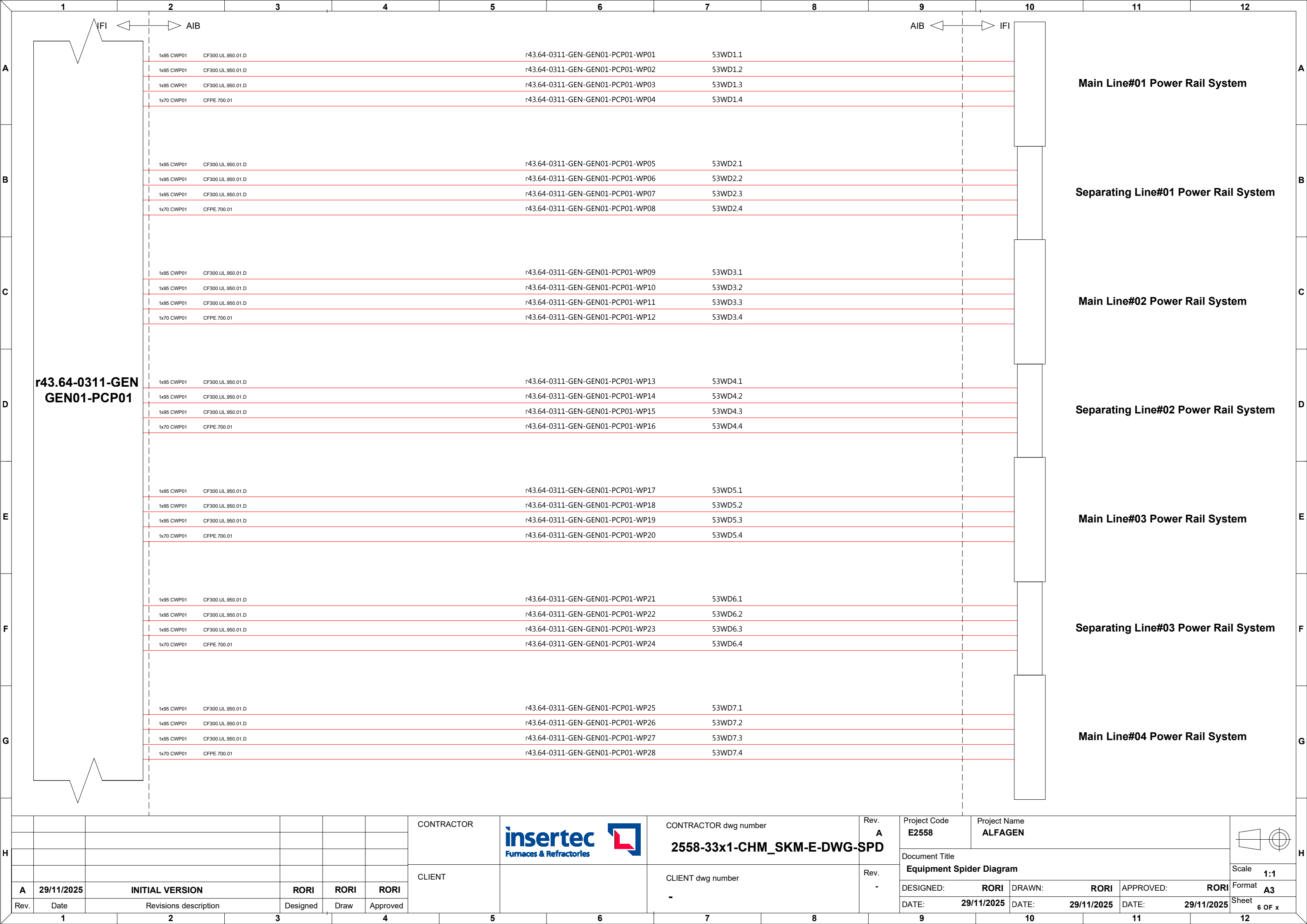
						CONTRACTOR		CONTRACTOR dwg number <b>2558-33x1-CHM_SKM-E-DWG-SPD</b>	Rev. <b>A</b>	Project Code <b>E2558</b>	Project Name <b>ALFAGEN</b>			
									Rev. <b>-</b>	Document Title <b>Equipment Spider Diagram</b>			Scale <b>1:1</b>	
<b>A</b>	<b>29/11/2025</b>	<b>INITIAL VERSION</b>	<b>RORI</b>	<b>RORI</b>	<b>RORI</b>					DESIGNED: <b>RORI</b>	DRAWN: <b>RORI</b>	APPROVED: <b>RORI</b>	Format <b>A3</b>	
Rev.	Date	Revisions description	Designed	Draw	Approved	CLIENT		CLIENT dwg number <b>-</b>		DATE: <b>29/11/2025</b>	DATE: <b>29/11/2025</b>	DATE: <b>29/11/2025</b>	Sheet <b>2 OF x</b>	

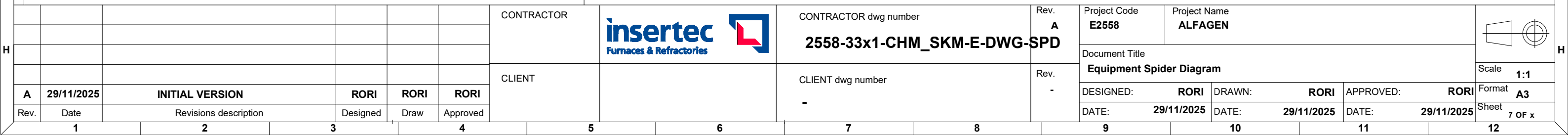




H							CONTRACTOR		CONTRACTOR dwg number <b>2558-33x1-CHM_SKM-E-DWG-SPD</b>	Rev. <b>A</b>	Project Code <b>E2558</b>	Project Name <b>ALFAGEN</b>												
							CLIENT		CLIENT dwg number <b>-</b>	Rev. <b>-</b>	Document Title <b>Equipment Spider Diagram</b>			Scale <b>1:1</b>										
	<b>A</b>	<b>29/11/2025</b>	<b>INITIAL VERSION</b>			<b>RORI</b>					<b>RORI</b>	<b>RORI</b>	DESIGNED: <b>RORI</b>	DRAWN: <b>RORI</b>	APPROVED: <b>RORI</b>	Format <b>A3</b>								
	Rev.	Date	Revisions description			Designed					Draw	Approved	DATE: <b>29/11/2025</b>	DATE: <b>29/11/2025</b>	DATE: <b>29/11/2025</b>	Sheet <b>4 OF x</b>								
	<b>1</b>		<b>2</b>		<b>3</b>		<b>4</b>		<b>5</b>		<b>6</b>		<b>7</b>		<b>8</b>		<b>9</b>		<b>10</b>		<b>11</b>		<b>12</b>	








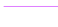






# LOCAL CONTROL PANEL


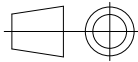
## r43.64-33x1-CHM/SKM-GEN01-LCP01

### LEGEND

	400Vac Power supply		Regular control signals
	400Vac UPS power supply		Analog & shielded signals
	230Vac Power supply		T/C connection
	230Vac UPS power supply		Communication connection

### CATEGORY

Power cables
CWP01: Regular power cables
CWP02: Shielded power cable
CWP03: Flexible power cables
CWP04: Regular high temperature power cables
CWP05: Shielded high temperature power cables
CWP06: General use power cable
Instrumentation and control cables
CWC01: Regular instrumentation control cables
CWC02: Shielded instrumentation control cables
CWC03: Thermocouple cable
CWC04: Flexible instrumentation control cables
CWC05: High voltage cables for ignition transformers
CWC06: Regular high temperature instrumentation control cables
CWC07: Shielded high temperature instrumentation control cables
Communication cables
CWE01: Fieldbus communication cable (Inside cabinets)
CWE02: Fieldbus communication cable (Outside cabinets)
CWE03: Optic fibre communication cable

						CONTRACTOR		CONTRACTOR dwg number <b>2558-33x1-CHM_SKM-E-DWG-SPD</b>	Rev. <b>A</b>	Project Code <b>E2558</b>	Project Name <b>ALFAGEN</b>			
									Rev. <b>-</b>	Document Title <b>Equipment Spider Diagram</b>			Scale <b>1:1</b>	
<b>A</b>	<b>29/11/2025</b>	<b>INITIAL VERSION</b>		<b>RORI</b>	<b>RORI</b>					DESIGNED: <b>RORI</b>	DRAWN: <b>RORI</b>	APPROVED: <b>RORI</b>	Format <b>A3</b>	
Rev.	Date	Revisions description		Designed	Draw	Approved		CLIENT dwg number <b>-</b>		DATE: <b>29/11/2025</b>	DATE: <b>29/11/2025</b>	DATE: <b>29/11/2025</b>	Sheet <b>8 OF x</b>	
1	2	3	4	5	6	7	8	9	10	11	12			





Defined in RIA documenation

23018\_WD00\_AIB\_PCS\_en\_21.11.2025

23018\_WD01\_AIB\_chm\_en\_24.11.2025

23018\_WD02\_AIB\_skm\_en\_24.11.2025

						CONTRACTOR		CONTRACTOR dwg number	Rev. A	Project Code E2558	Project Name ALFAGEN													
								CLIENT		CLIENT dwg number	Rev. -		Document Title Equipment Spider Diagram		Scale 1:1									
A	29/11/2025	INITIAL VERSION		RORI	RORI					RORI	-		DESIGNED: RORI	DRAWN: RORI	APPROVED: RORI	Format A3								
Rev.	Date	Revisions description			Designed	Draw	Approved			DATE: 29/11/2025	DATE: 29/11/2025	DATE: 29/11/2025	Sheet 9 OF x											
1		2			3		4		5		6		7		8		9		10		11		12	

# EQUIPMENT POWER CONTROL PANEL

## r43.64-33x1-CHM/SKM-GEN01-PCP01

CATEGORY	
Power cables	
CWP01:	Regular power cables
CWP02:	Shielded power cable
CWP03:	Flexible power cables
CWP04:	Regular high temperature power cables
CWP05:	Shielded high temperature power cables
CWP06:	General use power cable
Instrumentation and control cables	
CWC01:	Regular instrumentation control cables
CWC02:	Shielded instrumentation control cables
CWC03:	Thermocouple cable
CWC04:	Flexible instrumentation control cables
CWC05:	High voltage cables for ignition transformers
CWC06:	Regular high temperature instrumentation control cables
CWC07:	Shielded high temperature instrumentation control cables
Communication cables	
CWE01:	Fieldbus communication cable (Inside cabinets)
CWE02:	Fieldbus communication cable (Outside cabinets)
CWE03:	Optic fibre communication cable

LEGEND	
<div></div> 400Vac Power supply	<div></div> Regular control signals
<div></div> 400Vac UPS power supply	<div></div> Analog & shielded signals
<div></div> 230Vac Power supply	<div></div> T/C connection
<div></div> 230Vac UPS power supply	<div></div> Communication connection



						CONTRACTOR	<div><div>insertec</div><div>Furnaces &amp; Refractories</div></div> <div></div>	CONTRACTOR dwg number	Rev. A	Project Code	Project Name				<div><div></div><div></div></div>							
										E2558	ALFAGEN											
										Document Title												
						Equipment Spider Diagram				Scale	1:1											
A	29/11/2025	INITIAL VERSION			RORI	RORI	RORI	CLIENT		CLIENT dwg number	Rev. -	DESIGNED:	RORI	DRAWN:		RORI	APPROVED:	RORI	Format	A3		
Rev.	Date	Revisions description			Designed	Draw	Approved					-	DATE:	29/11/2025		DATE:	29/11/2025	DATE:	29/11/2025	Sheet	10 OF x	
	1		2		3			5		6		7		8		9		10		11		12

Defined in RIA documenation

23018\_WD00\_AIB\_PCS\_en\_21.11.2025

23018\_WD01\_AIB\_chm\_en\_24.11.2025

23018\_WD02\_AIB\_skm\_en\_24.11.2025

						CONTRACTOR		CONTRACTOR dwg number	Rev. A	Project Code E2558	Project Name ALFAGEN					
								CLIENT		CLIENT dwg number -	Rev. -		Document Title Equipment Spider Diagram			Scale 1:1
A	29/11/2025	INITIAL VERSION			RORI								RORI	RORI	DESIGNED: RORI	DRAWN: RORI
Rev.	Date	Revisions description			Designed	Draw	Approved			DATE: 29/11/2025	DATE: 29/11/2025	DATE: 29/11/2025	Sheet 11 OF x			
1	2	3	4	5	6	7	8	9	10	11	12					